

This is a great song for teaching whole note.

I Got a Letter

South Carolina Singing Game



The image shows two staves of musical notation for the song "I Got a Letter". The first staff begins with a treble clef, a key signature of one flat (B-flat), and a 4/4 time signature. The melody consists of quarter notes for the first six measures, followed by a quarter rest in the seventh measure, and a whole note in the eighth measure. The lyrics "I got a let-ter this morn - ing. Oh, yes!" are written below the staff. The second staff starts with a measure rest labeled "5", followed by the same melody as the first staff. The lyrics "I got a let-ter this morn - ing. Oh, yes!" are written below this staff as well.

Game: Students sit in a circle passing an envelope on the beat while singing the song. (Practice this first by having the envelope move on the beat above their heads so they know where it will stop the first time and then celebrate when they've done it correctly!) Be sure that "Oh" and "yes" get 4 beats. Whoever gets the letter on the last beat, opens the envelope and answers the question or follows the instruction.

A "question" might be "What is this symbol?" with a picture of a treble clef, quarter note or anything.

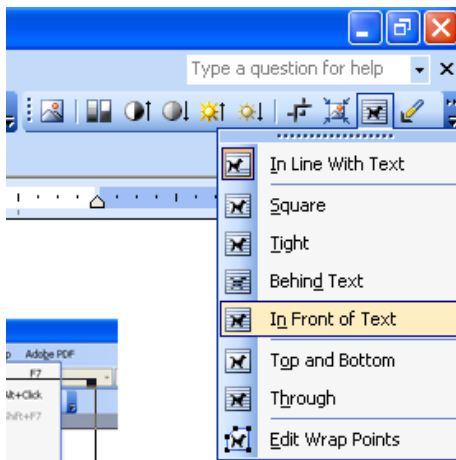
An "instruction" might be "Clap this rhythm." with the rhythm printed on the letter or "Ask your teacher to give any other student a different letter to answer.

I give my students a prize (school behavior system ticket) if they answer correctly.

See directions for the "technical part" of making the manipulatives below.

CHANGING PICTURE PROPERTIES FOR MORE CONTROL

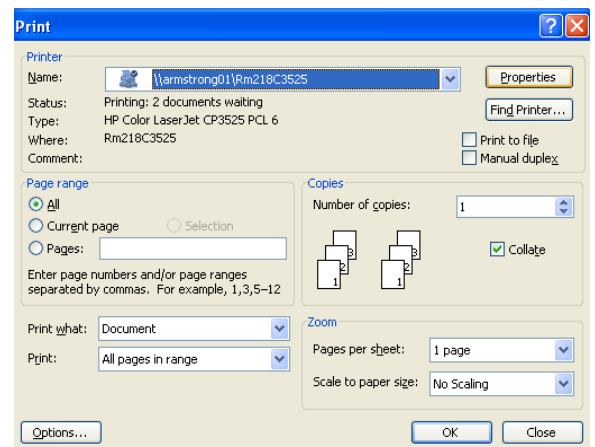
If you're looking for different stamps, I got these from <http://www.usps.com/>, right clicked on the ones I wanted, chose copy, and then pasted in my document.



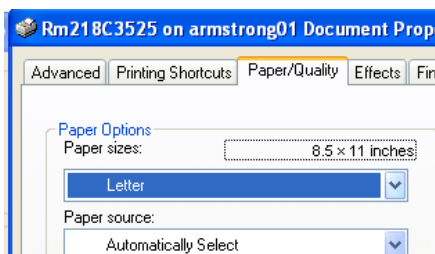
In order to place a picture exactly where you want it without affecting your text, from the Picture toolbar (which shows up as an option whenever you click on a picture in a document) choose the icon with a dog on it and then whichever option you prefer. I use "Tight", "Behind Text" or "In Front of Text" depending on my project.

PRINTING A FILE ON DIFFERENT SIZED PAPER

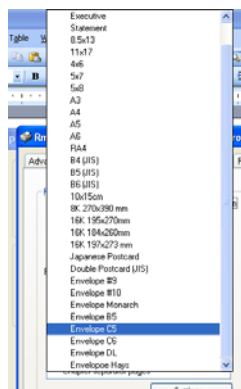
There are additional options beyond 8½ x 11 or legal size which you can use to print files such as 4x6 cards etc. Envelope C5 works for this project. To make the printing change, under the File menu choose Print. Then click on Properties.



Choose the Paper/Quality tab and from the drop down menu, choose the type you want.



in



You'll need to use the manual feed tray for your printer order to avoid paper jams.